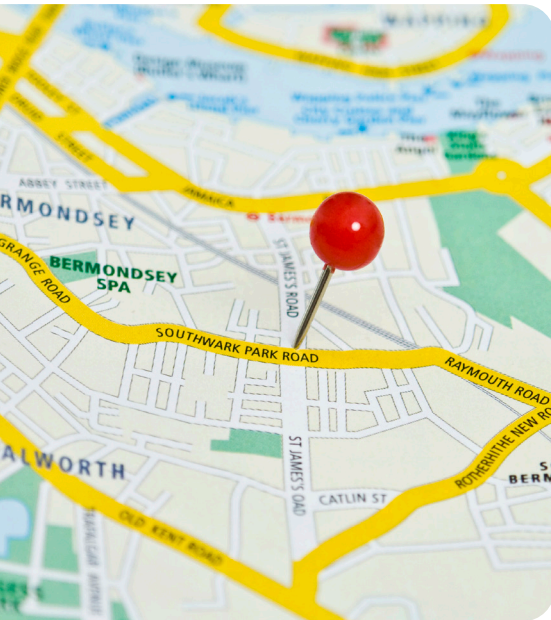


GIS



Integrate with your Existing GIS Solution

Leveraging the latest version of ESRI ArcGIS®, POSSE GIS utilizes ESRI's rich library of basemaps, providing a fully responsive, modern mapping experience out-of-the-box, as well as the capability to generate custom maps—enabling you to achieve the greatest benefits from your existing GIS investment. Seamlessly supporting integration with both industry standard map server applications and custom map viewers, POSSE GIS also includes an integrated browser-based map viewer for interactive searching, filtering, layering and sharing of your GIS data.

Effortlessly Display POSSE Data on a Map

POSSE PLS and POSSE ABC system user screens contain a one-click “Locate” button to quickly display an activity type or group of

activities (e.g., permits, inspections, licenses, etc.) on a map for contextual geospatial referencing and informed decision-making. You can also initiate a “Show me the related business information” search to retrieve in-progress and historical data.

Create Reports or Searches based on Geographical Parameters

POSSE provides the ability to initiate a search based on a geographic selection on a map. For example, to select all permit or license activity within a specified geographic boundary. POSSE also allows geographic buffers from a defined parcel (e.g., all parcels within 1,000 feet) and then automatically generates notification letters for all parcel owners in the selected buffer zone.

Initiate Work Directly from a Map

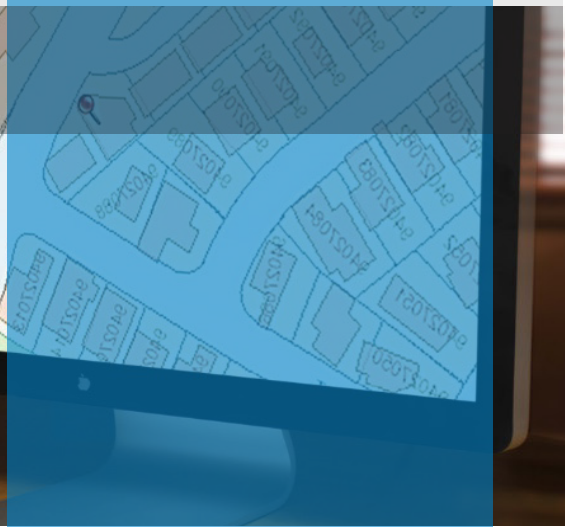
When you use POSSE GIS with our POSSE PLS Permitting & Inspections Module and POSSE PLS Code Enforcement Module, you can initiate a permit application or a complaint workflow directly from a map selection. From the POSSE Citizen portal, your citizens can drop an identifying pin on a map to locate an associated complaint. Map images can be pasted into management reports, advertisements, or other printed and electronic documents.

Fast and Efficient GIS Queries from within POSSE

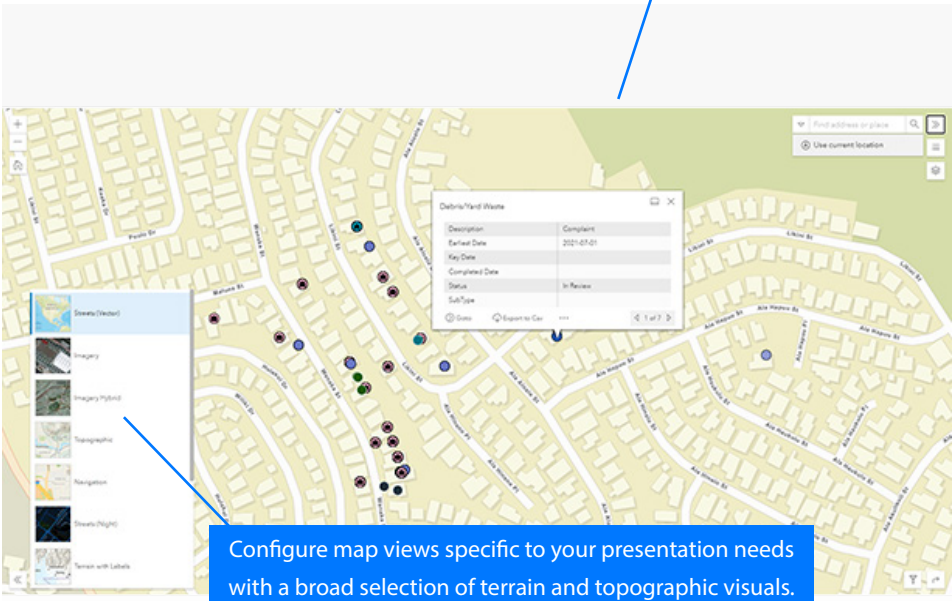
POSSE GIS provides access to fast, real-time spatial queries to create live warnings and holds for such attributes as flood plains, historic districts, underground storage tanks, neighborhood boundaries, locations of vicious dogs, and other GIS-specific data.

AT A GLANCE

- ✓ Seamless integration of geographical data with POSSE
- ✓ Comprehensive ability to locate, identify and drill into POSSE data from a map selection
- ✓ Create multiple GIS attributes for display on map layers
- ✓ Work with point, line and area map objects with real-time access to spatial information processing
- ✓ Visually relate GIS objects on a map (such as permit application to a flood zone)
- ✓ Integrate spatial processing into easy-to-read reports -- helping you make better business decisions
- ✓ Comprehensive suite of mapping widgets to facilitate searching, selection, layering, measuring, editing, route planning and more!



Locate, identify and drill into your POSSE data from a map selection with our mobile friendly Map Viewer.



Configure map views specific to your presentation needs with a broad selection of terrain and topographic visuals.

“POSSE is the most adaptable work management system that I have seen on the market. It can be supported by non-IT professionals. The company has been extremely responsive to our needs and is one of the most technically knowledgeable organizations that I have ever worked with.”

*Ken Schmidt
GIS Administrator
Planning and Permitting
City and County of Honolulu, Hawaii*

POSSE GIS enables the highest-level of ESRI-based GIS integration to allow jurisdictions to start, manage, track, route and investigate business-specific activities.

- GIS Map Display Integration
- ArcGIS compatible
- Case creation capability
- Inspection Routing

Questions? Contact Computronix today to learn more about how POSSE can help your organization.

computronix.com

Computronix (U.S.A.), Inc.
Denver, CO

Phone: 720.962.6300
Toll free: 866.962.6300

Computronix (Canada) Ltd.
Edmonton, AB

Phone: 780.454.3700
Toll free: 800.359.3758

